

# METAL, LIGHT & COLOR



# METAL, LIGHT & COLOR



Finish Line  
Photography by Troy Thies Photography

Stylmark provides solutions for commercial interior environments from retail and hospitality to out-of-home advertising. Stylmark, a leading U.S. manufacturer of aluminum fixtures, creates showcases, fitting rooms, LED lighting systems & light boxes, mirrors, shelving and trimwork anodized to an array of colors. For over 60 years, Stylmark continues to enhance the functionality and aesthetics of interiors for the world's largest brands.

## MANUFACTURING

Stylmark's state-of-the-art manufacturing capabilities allow for metal fabrication, curving, anodizing and assembly all under one roof. In addition to a broad range of aluminum extrusions for which we are well known, we also work with various other materials, such as stainless and mild steel. Our automated equipment, including robotic welding and high-speed machining centers, is equally effective on small and large quantity orders.

## CURVING

Virtually all of Stylmark's products can be curved to meet your radius requirements, enabling the creation of a product that is as unique as your application.



## COLOR & FINISH

We offer hundreds of color and finish combinations and can also custom match specified colors. In addition to anodizing, we can have your product powder coated to achieve the exact look you desire.

## DESIGN

Our experienced design engineering team will ensure your design comes to life with the quality you expect from Stylmark. Whether you're looking for a slight variation of an existing Stylmark product or have an entirely new product idea, we will work closely with your design staff at every stage of the project to create the perfect environment to meet your needs.

## COORDINATE FREIGHT SHIPMENTS

Stylmark is excited to announce a partnership with Echo Global Logistics to bring increased savings when Stylmark coordinates your domestic shipments. With the Echo partnership, Stylmark customers benefit from:

- Even lower freight costs
- Faster freight quotes

Echo Global, a leader in the transportation and supply industry, maintains a web-based technology platform that compiles and analyzes data from its network of over 24,000 transportation providers to provide lower costs and superior service.

## CUSTOMER SERVICE TEAM

Recognizing the importance of our customers and the power of great customer care, Stylmark's Customer Service Team represents the critical daily activities of customer support that care for our customers in a manner that sets industry standards for customer service.



# METAL, LIGHT & COLOR



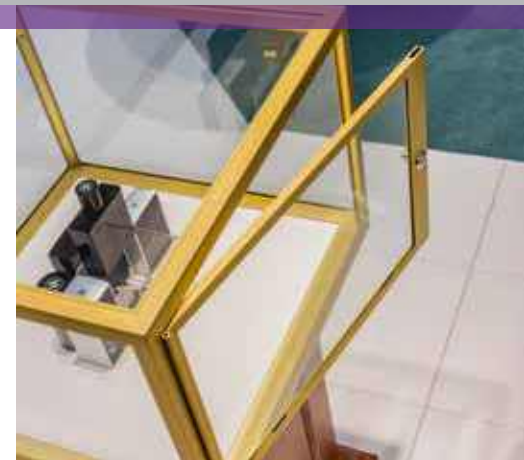
Crayola  
Photography by Troy Thies Photography

## WALLMAKER®

Create an unlimited variety of bright, beautiful and secure interior environments with the easy-to-install Stylmark WallMaker glass wall system. This versatile system consists of headers, sills, mullions, and corner assemblies that allow you to create a multitude of glass wall configurations.



Stylmark has recently expanded the WallMaker interior store front system to include hardware for 5/8" and 3/4" thick glass panes. The product line expansion also includes new glass clips for the thicker glass as well as taller, 8" sills.



### ROLLING DOORS

For over 50 years the Stylmark rolling door has been recognized as the finest in the industry. These doors move effortlessly at the touch of a finger, while adding security to your showcases. They feature anti-jump, security rolling hardware, which engages the door bottom to flanges on the track and prohibits removal of the door when it is locked. Should your design require hinged doors, be assured that Stylmark can provide these with the same level of quality.

### HINGED DOOR FRAMES

Door frames are designed to hold a single pane of glass for use in wall cabinets or recessed display cases. Stylmark door frames blend maximum durability and style to create a dynamic visual display sure to capture customers' attention.

### WARDROBE DOORS

Wardrobe doors from Stylmark are designed to give years of trouble free service. Wheel assemblies are incorporated into the bottom rail, providing a smooth-rolling, long-lasting unit.

# METAL, LIGHT & COLOR



Von Maur  
Photography by Mark Steele Photography

## TRIM MAKER®

With Stylmark's Trim Maker, you can easily add accent to walls, ceilings, soffits and columns. Trim Maker is available in hundreds of shape, color and finish combinations. You can also group shapes to create your own look or work with our engineers to design a shape that's perfect for your unique application. Installation is simple. Just secure the base and snap the trim into place.

## FRAMING SYSTEMS FOR MONITORS & DIGITAL WALLS

Stylmark provides a cost-effective way to dress up your monitor and video wall installation with a stylish frame that matches interior design and hides all monitor elements including mounts, cords & media players from view.





## MIRROR FRAMING

Mirrors framed by Stylmark have clean lines that provide a subtle decorative accent to any area. And because they're from Stylmark, you can depend on a product that's designed to give years of trouble-free service. Our mirror products include Tri-Vue Mirrors, mirror frames, and mirror trims. Mirror product components can be ordered in 12 foot lengths, or fabricated to your size specifications.

## MIRROR SOLUTIONS

Mirror Solutions by Stylmark are designed to offer elegant and stylish alternatives to interior designers and store merchandisers. Multiple finish, lighting, and style options are all available with Mirror Solutions by Stylmark. Backlit mirrors feature multiple LED color temperatures allowing designers to specify the mirror's lighting and enhance the surrounding space. Mirror Solutions by Stylmark provide the right reflection, leaving the best impression in any environment.



## COSMETIC MIRROR

Natural lighting is best when applying make-up, but what happens when you are trying to do your make-up for evening. Cosmetic Mirrors by Stylmark come in standard cool white temperature but you can customize your mirror to have color temperature changing control, so you can see how your make-up will look during the day, the at office, or out at night.

## ADMIRE MIRROR

The Admire LED Mirror from Stylmark combines budget-friendly design with flattering soft white LED lighting to a full length mirror perfect for fitting rooms. The simple styling will fit almost any decor. With the compact depth of the Admire LED Mirror, fitting into your smaller rooms won't be a concern.

# METAL, LIGHT & COLOR



Von Maur  
Photography by Mark Steele Photography

## FITTING ROOMS

Stylmark offers sturdy, high quality fitting room systems that are designed to fit together easily and quickly to allow for rapid field installation. With the flexibility of our post-and-panel system, you can create unique, cost-effective modular designs in numerous store areas.

Stylmark fitting room systems work beautifully with their mirror products. And because it all comes from Stylmark, you can choose from our full library of colors and finishes to create a visually pleasing fitting room environment.





### OPTIMA 1000 LED® BACKLIT LIGHT BOX

The Optima 1000 LED Backlit Light Box provides the best light by combining the brightness of fluorescent with the benefits of LED. The Optima 1000 Backlit Light Box provides maximum impact by making every inch of the graphic it displays equally illuminated. Yet, it costs less to operate than fluorescents, requires less maintenance and is better for the environment.

### OPTIMA 450 LED® BACKLIT LIGHT BOX

Already the brightest and the most customizable light box of its kind in the industry, the Optima 450 now also offers the ability to separate the LED panel from the LED strips, making in-the-field replacements simple and easy. The Optima 450 also has a newly updated, sleek design. The angled, faceted design of the light box gives the Optima 450 LED a more visually appealing look and feel that is ideally suited for commercial environments.

### OPTIMA LED® STRETCHLITE LIGHT BOX

Meeting retail demands for high-impact environments, Stylmark's Optima LED StretchLite Backlit Light Box to create arresting and compelling merchandise displays with tension-fabric graphics. Optima LED StretchLite combines the brilliance and uniformity of LED technology with the dramatic dimensions of tension fabric displays to achieve unrivaled visual impact.



New to the Optima LED Stretchlite family are the DS5 & DS8 units which can accommodate graphics up to 30 feet in length. The large display area afforded by these tension-fabric light boxes make them impossible to miss at any angle.

With the introduction of the StretchLite Perimeter, the Optima LED family now includes edge-lit, backlit and perimeter lit for three different lighting options based on brightness and pricing.

# METAL, LIGHT & COLOR



Tapper's Diamonds & Fine Jewelry  
Photography by John D'Angelo Photography

## SHOWCASE FRAMES

Our customized aluminum showcase frames were created with the customer in mind. Showcase frames are available in virtually any color and finish. Top and bottom frames are welded, providing unsurpassed security and stability.

## SHOWCASE LIGHTING

Draw customers to the light and let your product sell itself with Stylmark showcase lighting. Designed to enhance Stylmark's established line of aluminum and steel showcase components, our reflectors and spotlights achieve a clean, streamlined look while efficiently managing heat output.



## NIGEL 11/16" SHOWCASE REFLECTOR

NIGEL, an LED light engine that is just 11/16" in diameter with the same light output as standard size light engines is perfect for commercial showcase displays that require a slim profile. The new NIGEL light engine, available in Stylmark's linear showcase reflectors and shelf lighting products, will be available in 3500K, 4000K and 5000K color temperature and will offer many features including ANSI Standard chromaticity binning, higher efficiencies, dimming capabilities, and polarity insensitivity.

## 2-WATT SPOTLIGHT

The Stylmark LED 2-Watt Spotlight's elegant design provides crisp, bright light allowing the customer to focus on the merchandise. The 2-watt LED spotlight offers a "plug and play" wiring system for worry-free installations and an articulating spotlight cone, allowing retailers more flexibility in highlighting merchandise.



## FLEXIS DISPLAYMAKER WALL MERCHANDISING SYSTEM

Flexis™ DisplayMaker is the new wall merchandising system from Stylmark. At the core of Flexis is a low voltage powered standard system which enables users to flexibly create a variety of merchandising solutions. This can be achieved by adding Stylmark lit shelves, lit mirrors, light boxes, showcases, monitors, or just about anything requiring a 24volt input voltage. This UL Listed system allows retailers the ability to re-set and re-merchandise the wall with ease and with no wires, a true plug-and-play solution.

## LED POWERTRACK SHELVES

The Stylmark LED Power Track Light Shelf is designed for retail shelving using wall standards. Utilizing a low-voltage powered standard, the LED Shelf provides an alternative to conventional shelf lighting. The slim profile maximizes the merchandise's viewable area & eliminates visible wiring.

- ARCHITECTURAL TRIM
- CUSTOM FIXTURE DEVELOPMENT
- FITTING ROOM SYSTEMS
- LED LIGHT BOXES
- LED FITTING ROOM MIRRORS
- MIRROR TRIMS
- ROLLING DOORS
- SHELVING SYSTEMS
- SHOWCASE FRAMES & LIGHTING
- STORE FRONT SYSTEMS
- TENSION FABRIC LED LIGHT BOXES
- WARDROBE DOORS



